



26th of August to September 1st \_ COIMBRA \_ PORTUGAL



# ECA CANOE POLO EUROPEAN CHAMPIONSHIPS 2019

Teams Info  
AUGUST 2019





## **DATES, TIME AND RELATED INFORMATION**

The ECA Canoe Polo European Championships 2019 will take place during the week of 26 of August to 1 of September 2019.

### **24 OF AUGUST-SATURDAY**

- Opening of the competition site
- Arrival of Teams

### **25 OF AUGUST – SUNDAY**

- Arrival of Teams
- Opening of Accreditation

### **26 OF AUGUST – MONDAY**

- Arrival of Teams
- Accreditation
- Opening of Scrutineering

### **27 OF AUGUST – TUESDAY**

- Arrival of Teams
- Accreditation

### **28 OF AUGUST – WEDNESDAY**

- Accreditation
- Official training
- Team leaders meeting
- Opening Ceremony

### **29 OF AUGUST TO 1 OF SEPTEMBER**

- Competition days



## Detailed Schedules

### ACCREDITATION

Sunday 25 of August – 14h00 to 19h00

Monday and Tuesday 26 and 27 of August – 09h00 to 18h30

Wednesday 28 of August – 08h30 to 17h30

Thursday 29 of August – 07:30 to 18h00

Friday 30 of August – 07:30 to 18h30

Saturday 31 of August – 07:30 to 19:00

Sunday 1st of September – 07h30 to 17h30

Accreditation will be in the team quarters (a school near the venue) until 28 of August.  
During the competition days it will be at the Info Point at the venue.

Only one representative (team leader) per country should attend at the accreditation desk at team quarters (school) to collect their country's documentation.

### SCRUTINEERING

The scrutineering will take place at the venue from Monday at 13h30.

The scrutineering schedule will be available at accreditation to the country representative.

The scrutineering ends at 17h15 on Wednesday 28 of August.



## TEAM LEADER'S MEETING

The meeting will take place at Coimbra University Stadium on Wednesday 28th at 11h00.

The location is around 1km away from the venue and there will be a special shuttle bus service to transport all team leaders and other attendees. Busses will depart at 10h30 from the venue and will return 10 minutes after the end of the meeting.

ONLY one team leader per country plus one Coach, or team captain of that country is allowed to attend.

Topics for the meeting

- Welcome from the Mayor of Coimbra,
- Welcome from the Portuguese Canoe Federation President,
- Venue, accommodation, transportation and other questions
- Refereeing and rules
- Other technical information about the competition

## OPENING CEREMONY

The Ceremony will take place at the venue on the left-hand side (facing Mondego river) of the pedestrian bridge.

The organizing committee requests one athlete per TEAM be available for the small parade at the venue. Those accepting should be at the info point at 17h30.

There will be 600 seats available and everyone is invited.

The ceremony is predicted to last 45 minutes.





[illegible][illegible]

08:30	09:05	402	W.U21	WUB	POLAND	PORTUGAL		00:35
09:05	09:40	302	M.U21	MUC	RUSSIA	PORTUGAL		00:35
09:40	10:15	305	M.U21	MUB	DENMARK	NETHERLANDS		00:35
10:15	10:50	102	MEN	MC	ITALY	AUSTRIA		00:35
10:50	11:25	105	MEN	MB	BELGIUM	PORTUGAL		00:35
11:25	12:00	202	WOMEN	WA	ITALY	SPAIN		00:35
12:00	12:35	406	W.U21	WUB	POLAND	ITALY		00:35
12:35	13:10	308	M.U21	MUB	CZECH REPUBLIC	DENMARK		00:35
13:10	13:45	312	M.U21	MUB	NETHERLANDS	GERMANY		00:35
13:45	14:20	109	MEN	MC	AUSTRIA	POLAND		00:35
14:20	14:55	112	MEN	MB	PORTUGAL	GERMANY		00:35
14:55	15:30	206	WOMEN	WA	NETHERLANDS	POLAND		00:35
15:30	16:05	410	W.U21	WUB	FRANCE	PORTUGAL		00:35
16:05	16:40							00:35
16:40	17:15	319	M.U21	MUB	GERMANY	DENMARK		00:35
17:15	17:50	210	WOMEN	WA	GERMANY	NETHERLANDS		00:35
20:00								

08:30	09:05	404	W.U21	WUB	FRANCE	ITALY		00:35
09:05	09:40							00:35
09:40	10:15	307	M.U21	MUD	LITHUANIA	FRANCE		00:35
10:15	10:50							00:35
10:50	11:25	107	MEN	MD	SWEDEN	NETHERLANDS		00:35
11:25	12:00	204	WOMEN	WB	DENMARK	GREAT BRITAIN		00:35
12:00	12:35	408	W.U21	WUB	SPAIN	PORTUGAL		00:35
12:35	13:10	310	M.U21	MUD	BELGIUM	LITHUANIA		00:35
13:10	13:45	314	M.U21	MUD	FRANCE	ITALY		00:35
13:45	14:20	110	MEN	MD	RUSSIA	SWEDEN		00:35
14:20	14:55	114	MEN	MD	NETHERLANDS	SWITZERLAND		00:35
14:55	15:30	208	WOMEN	WB	GREAT BRITAIN	FRANCE		00:35
15:30	16:05	412	W.U21	WUB	POLAND	SPAIN		00:35
16:05	16:40	317	M.U21	MUD	BELGIUM	FRANCE		00:35
16:40	17:15	321	M.U21	MUD	ITALY	LITHUANIA		00:35
17:15	17:50	212	WOMEN	WB	FRANCE	DENMARK		00:35
20:00					CLOSING OF COMPETITION SITE			

[illegible][illegible]

08:30	09:05	414	W.U21	WUB	FRANCE	SPAIN			00:35
09:05	09:40	214	WOMEN	WA	SPAIN	POLAND			00:35
09:40	10:15	323	M.U21	MUF	2 <sup>º</sup> MUA	2 <sup>º</sup> MUD			00:35
10:15	10:50	326	M.U21	MUF	1 <sup>º</sup> MUC	1 <sup>º</sup> MUB			00:35
10:50	11:25	116	MEN	MC	AUSTRIA	DENMARK			00:35
11:25	12:00	119	MEN	MB	GERMANY	BELGIUM			00:35
12:00	12:35	418	W.U21	WUB	POLAND	FRANCE			00:35
12:35	13:10	216	WOMEN	WA	NETHERLANDS	SPAIN			00:35
13:10	13:45	329	M.U21	MUE	1 <sup>º</sup> MUD	2 <sup>º</sup> MUC			00:35
13:45	14:20	333	M.U21	MUF	1 <sup>º</sup> MUB	2 <sup>º</sup> MUA			00:35
14:20	14:55	422	W.U21	WUD	1 <sup>º</sup> WUB	3 <sup>º</sup> WUA			00:35
14:55	15:30								00:35
15:30	16:05	126	MEN	MF	1 <sup>º</sup> MC	1 <sup>º</sup> MB			00:35
16:05	16:40	218	WOMEN	WD	3 <sup>º</sup> WB	4 <sup>º</sup> WB			00:35
16:40	17:15	426	W.U21	WUD	2 <sup>º</sup> WUA	3 <sup>º</sup> WUA			00:35
17:15	17:50	337	M.U21	MUF	2 <sup>º</sup> MUD	1 <sup>º</sup> MUB			00:35
17:50	18:25	340	M.U21	MUF	2 <sup>º</sup> MUA	1 <sup>º</sup> MUC			00:35
20:00					CLOSING OF COMPETITION SITE				

08:30	09:05	416	W.U21	WUB	ITALY	PORTUGAL		00:35
09:05	09:40							00:35
09:40	10:15							00:35
10:15	10:50	328	M.U21	MUH	3º MUD	4º MUC		00:35
10:50	11:25							00:35
11:25	12:00	121	MEN	MD	SWITZERLAND	SWEDEN		00:35
12:00	12:35	420	W.U21	WUB	SPAIN	ITALY		00:35
12:35	13:10							00:35
13:10	13:45	331	M.U21	MUG	4º MUD	3º MUC		00:35
13:45	14:20	335	M.U21	MUH	4º MUC	3º MUB		00:35
14:20	14:55	424	W.U21	WUE	5º WUA	4º WUB		00:35
14:55	15:30	124	MEN	MG	3º MA	4º MD		00:35
15:30	16:05	128	MEN	MH	3º MD	4º MC		00:35
16:05	16:40	220	WOMEN	WC	2º WA	1º WB		00:35
16:40	17:15	428	W.U21	WUE	4º WUB	4º WUA		00:35
17:15	17:50	342	M.U21	MUH	3º MUB	3º MUD		00:35
17:50	18:25							
20:00					CLOSING OF COMPETITION SITE			



08:30	09:10	429	W.U21	WUC	1 <sup>st</sup> WUA	2 <sup>nd</sup> WUB			00:40
09:10	09:50	348	M.U21	5 to 8	3 <sup>rd</sup> MUE	4 <sup>th</sup> MUF			00:40
09:50	10:30	129	MEN	ME	1 <sup>st</sup> MD	2 <sup>nd</sup> MC			00:40
10:30	11:10	132	MEN	ME	2 <sup>nd</sup> MB	1 <sup>st</sup> MA			00:40
11:10	11:50	221	WOMEN	WD	3 <sup>rd</sup> WA	4 <sup>th</sup> WB			00:40
11:50	12:30	433	W.U21	SF 1	1 <sup>st</sup> WUC	2 <sup>nd</sup> WUD			00:40
12:30	13:10	350	M.U21	SF 1	1 <sup>st</sup> MUE	2 <sup>nd</sup> MUF			00:40
13:10	13:50	136	MEN	ME	1 <sup>st</sup> MD	2 <sup>nd</sup> MB			00:40
13:50	14:30	225	WOMEN	WD	3 <sup>rd</sup> WB	5 <sup>th</sup> WA			00:40
14:30	15:10	355	M.U21	5 <sup>th</sup> / 6 <sup>th</sup>	W 348	W 349			00:40
15:10	15:50	435	W.U21	5 <sup>th</sup> / 6 <sup>th</sup>	3 <sup>rd</sup> WUC	3 <sup>rd</sup> WUD			00:40
15:50	16:30	356	M.U21	3 <sup>rd</sup> / 4 <sup>th</sup>	L 350	L 351			00:40
16:30	17:10	436	W.U21	3 <sup>rd</sup> / 4 <sup>th</sup>	L 433	L 434			00:40
17:10	17:50								00:40
17:50	18:30	437	W.U21	FINAL	W 433	W 434			00:40
18:30	19:10	357	M.U21	FINAL	W 350	W 351			00:40
			PODIUM UNDER 21						
20:00			CLOSING OF COMPETITION SITE						

[illegible][illegible][illegible]

Version: 2.10 (*)	01/09/2019 - SUNDAY - PITCH 1							
TS: 2019.08.21	GAME	CATEGORY	GROUP	TEAM 1	TEAM 2	REFEREE 1	REFEREE 1	DURATION

(\*) Game times corrected on day 4.

08:30	09:10	139	MEN	ME	1 <sup>st</sup> MA	2 <sup>nd</sup> MC			00:40
09:10	09:50	231	WOMEN	WD	3 <sup>rd</sup> WA	3 <sup>rd</sup> WB			00:40
09:50	10:10	20 min. Break							00:20
10:10	10:50	143	MEN	MI (13/14/15)	3 <sup>rd</sup> MH	3 <sup>rd</sup> MG			00:40
10:50	11:30	150	MEN	SF 1	1 <sup>st</sup> ME	2 <sup>nd</sup> MF			00:40
11:30	12:10	148	MEN	5 to 8	3 <sup>rd</sup> ME	4 <sup>th</sup> MF			00:40
12:10	12:50	153	MEN	9 <sup>th</sup> / 10 <sup>th</sup>	W 146	W 147			00:40
12:50	13:30	234	WOMEN	SF 1	1 <sup>st</sup> WC	W233			00:40
13:30	14:10	154	MEN	7 <sup>th</sup> / 8 <sup>th</sup>	L 148	L 149			00:40
14:10	14:50	155	MEN	5 <sup>th</sup> / 6 <sup>th</sup>	W 148	W 149			00:40
14:50	15:30	156	MEN	3 <sup>rd</sup> / 4 <sup>th</sup>	L 150	L 151			00:40
15:30	16:10	236	WOMEN	3 <sup>rd</sup> / 4 <sup>th</sup>	L 234	L 235			00:40
16:10	16:50								00:40
16:50	17:30	237	WOMEN	FINAL	W 234	W 235			00:40
17:30	18:10	157	MEN	FINAL	W 150	W 151			00:40
16:50	PODIUMS SENIOR								
20:00	CLOSING OF COMPETITION SITE								

Version: 2.10 (*)	01/09/2019 - SUNDAY - PITCH 3							
TS: 2019.08.21	GAME	CATEGORY	GROUP	TEAM 1	TEAM 2	REFEREE 1	REFEREE 1	DURATION

(\*) Game times corrected on day 4.

08:30	09:10	141	MEN	MG	3 <sup>e</sup> MA	3 <sup>e</sup> MC			00:40
09:10	09:50								00:40
09:50	10:10	20 min. Break							00:20
10:10	10:50	146	MEN	9 to 12	1 <sup>a</sup> MG	2 <sup>a</sup> MH			00:40
10:50	11:30	233	WOMEN	5 <sup>a</sup> / SF2	4 <sup>a</sup> WC	1 <sup>a</sup> WD			00:40
11:30	12:10								00:40
12:10	12:50	144	MEN	MI (13/14/15)	3 <sup>a</sup> MG	4 <sup>a</sup> MG			00:40
20:00	CLOSING OF COMPETITION SITE								

Version: 2.10 (*)	01/09/2019 - SUNDAY - PITCH 2							
TS: 2019.08.21	GAME	CATEGORY	GROUP	TEAM 1	TEAM 2	REFEREE 1	REFEREE 1	DURATION
(*) Game times corrected on day 4.								

08:30	09:10	140	MEN	MF	2 <sup>o</sup> MA	1 <sup>o</sup> MC			00:40
09:10	09:50	232	WOMEN	WD	4 <sup>o</sup> WA	4 <sup>o</sup> WB			00:40
09:50	10:10	20 min. Break							00:20
10:10	10:50								00:40
10:50	11:30	151	MEN	SF 2	2 <sup>o</sup> ME	1 <sup>o</sup> MF			00:40
11:30	12:10	149	MEN	5 to 8	4 <sup>o</sup> ME	3 <sup>o</sup> MF			00:40
12:10	12:50	152	MEN	11 <sup>o</sup> / 12 <sup>o</sup>	L 146	L 147			00:40
12:50	13:30	235	WOMEN	SF 2	2 <sup>o</sup> WC	3 <sup>o</sup> WC			00:40
13:30	14:10								00:40
14:10	14:50	145	MEN	Ml (13/14/15)	4 <sup>o</sup> MG	3 <sup>o</sup> MH			00:40
20:00	CLOSING OF COMPETITION SITE								

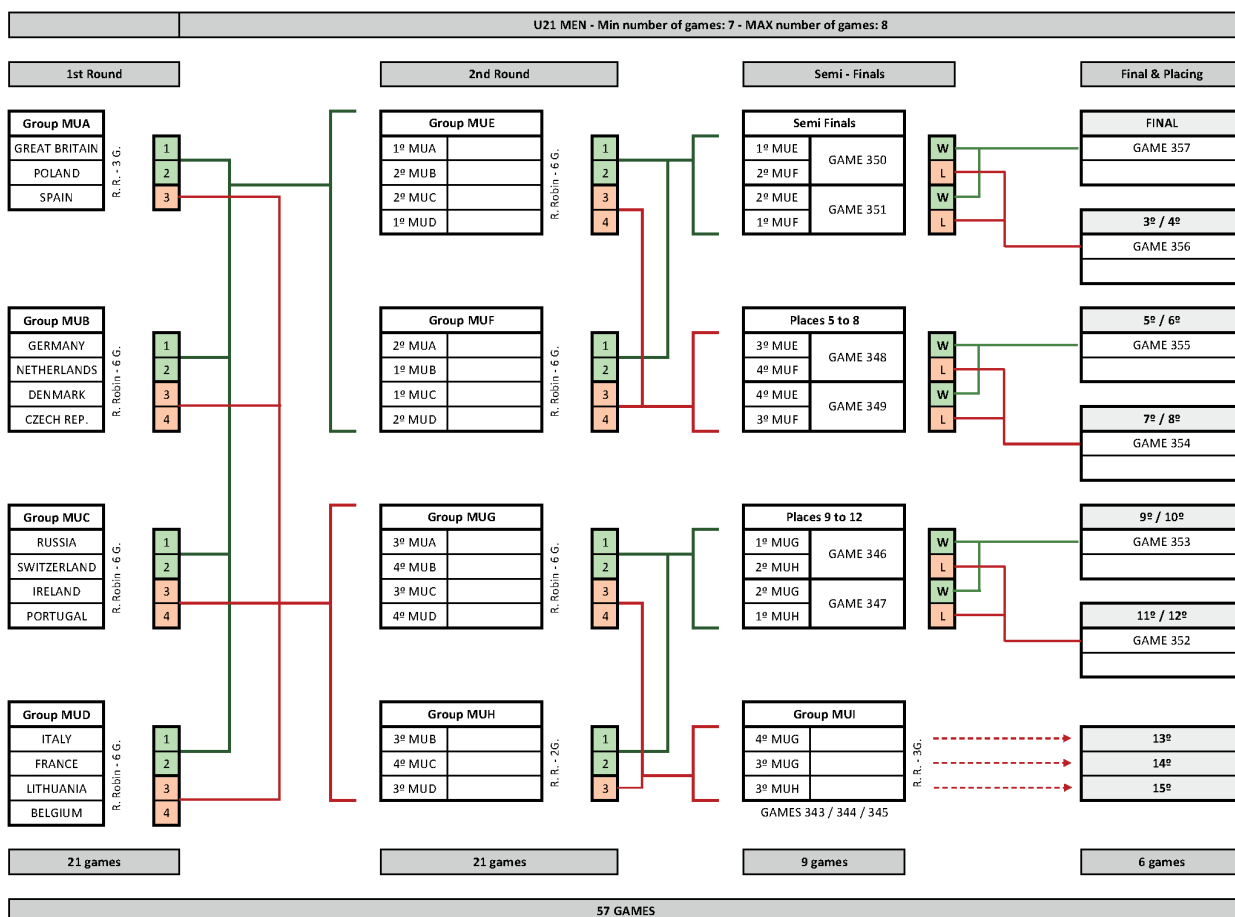
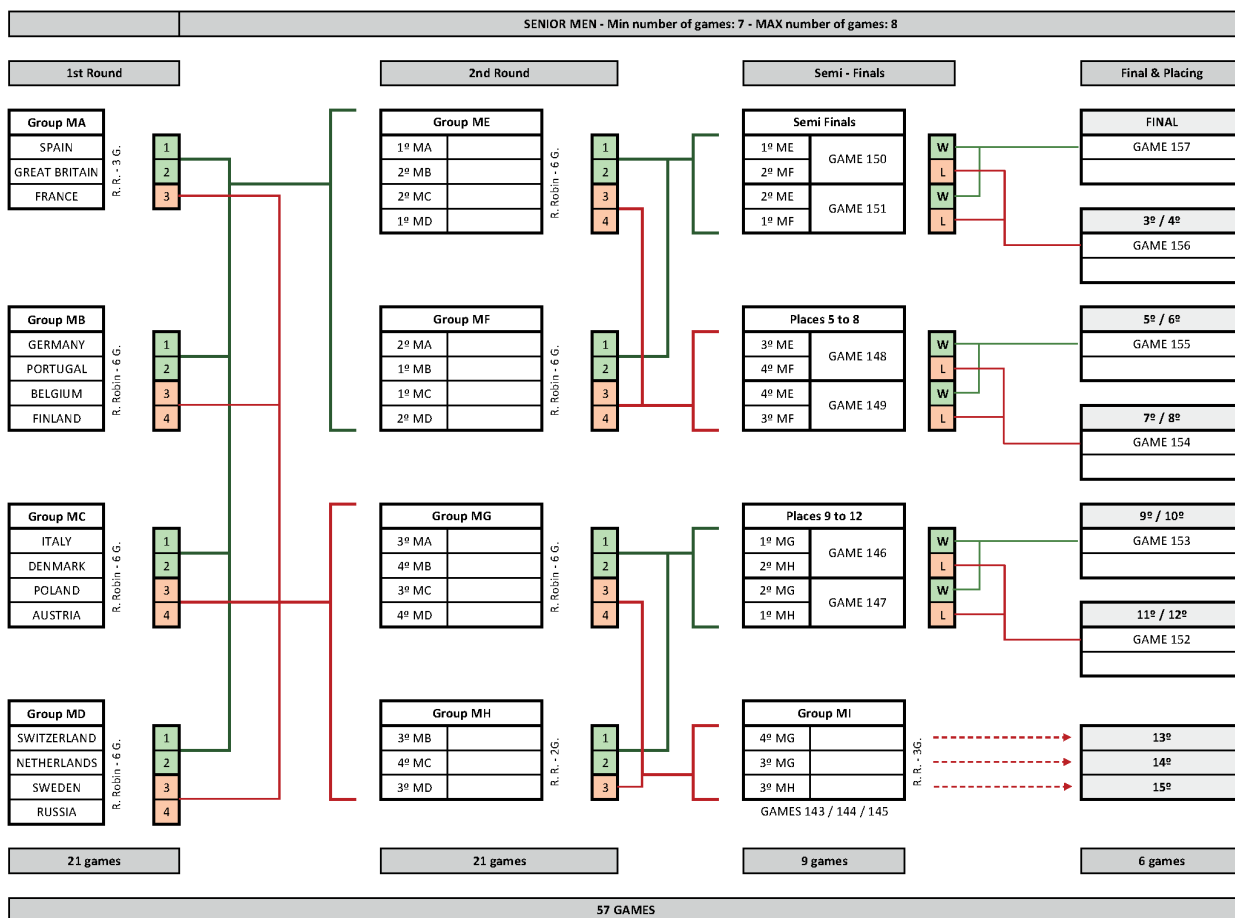
Version: 2.10 (*)	01/09/2019 - SUNDAY - PITCH 4							
TS: 2019.08.21	GAME	CATEGORY	GROUP	TEAM 1	TEAM 2	REFEREE 1	REFEREE 1	DURATION

(\*) Game times corrected on day 4.

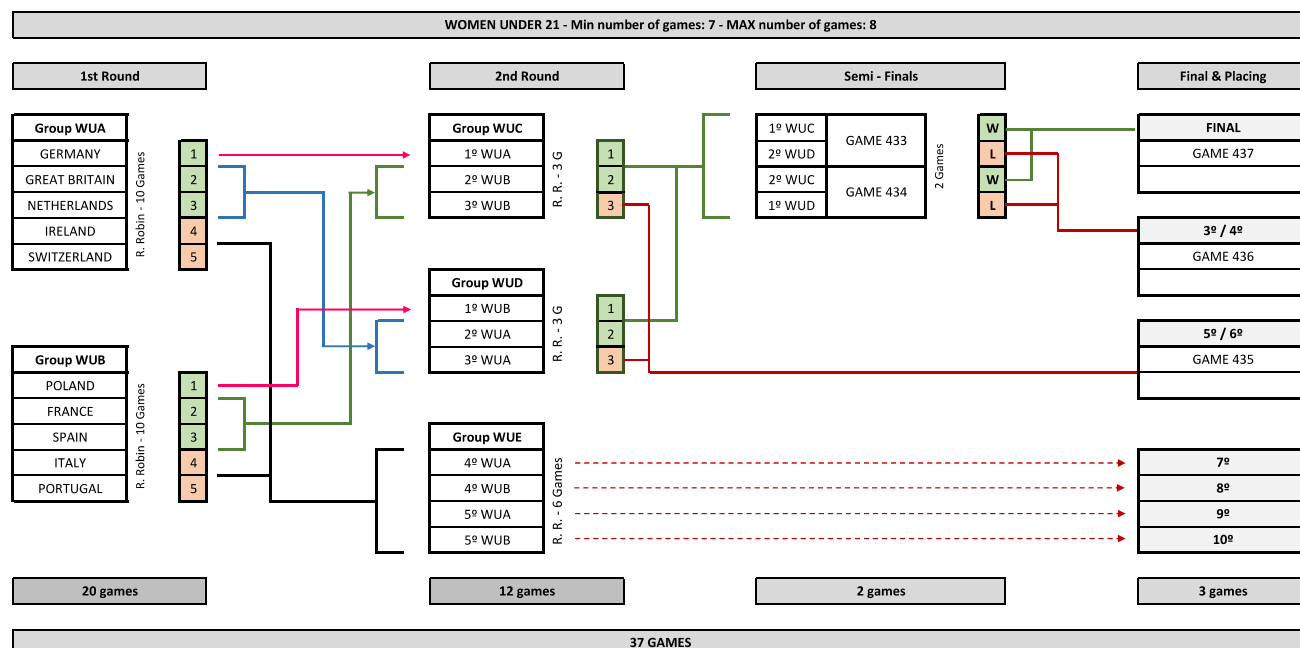
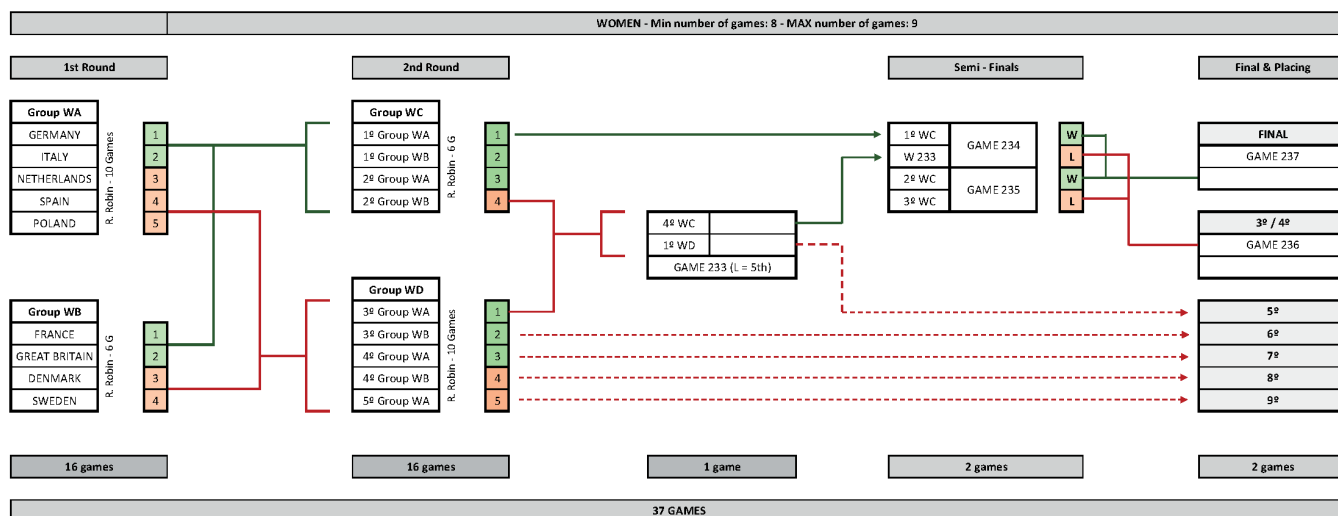
08:30	09:10	142	MEN	MH	3 <sup>e</sup> MB	3 <sup>e</sup> MD			00:40
09:10	09:50								00:40
09:50	10:10	20 min. Break							00:20
10:10	10:50	147	MEN	9 to 12	2 <sup>e</sup> MG	1 <sup>e</sup> MH			00:40
20:00	CLOSING OF COMPETITION SITE								



# TEAM GROUPS AND DRAWS

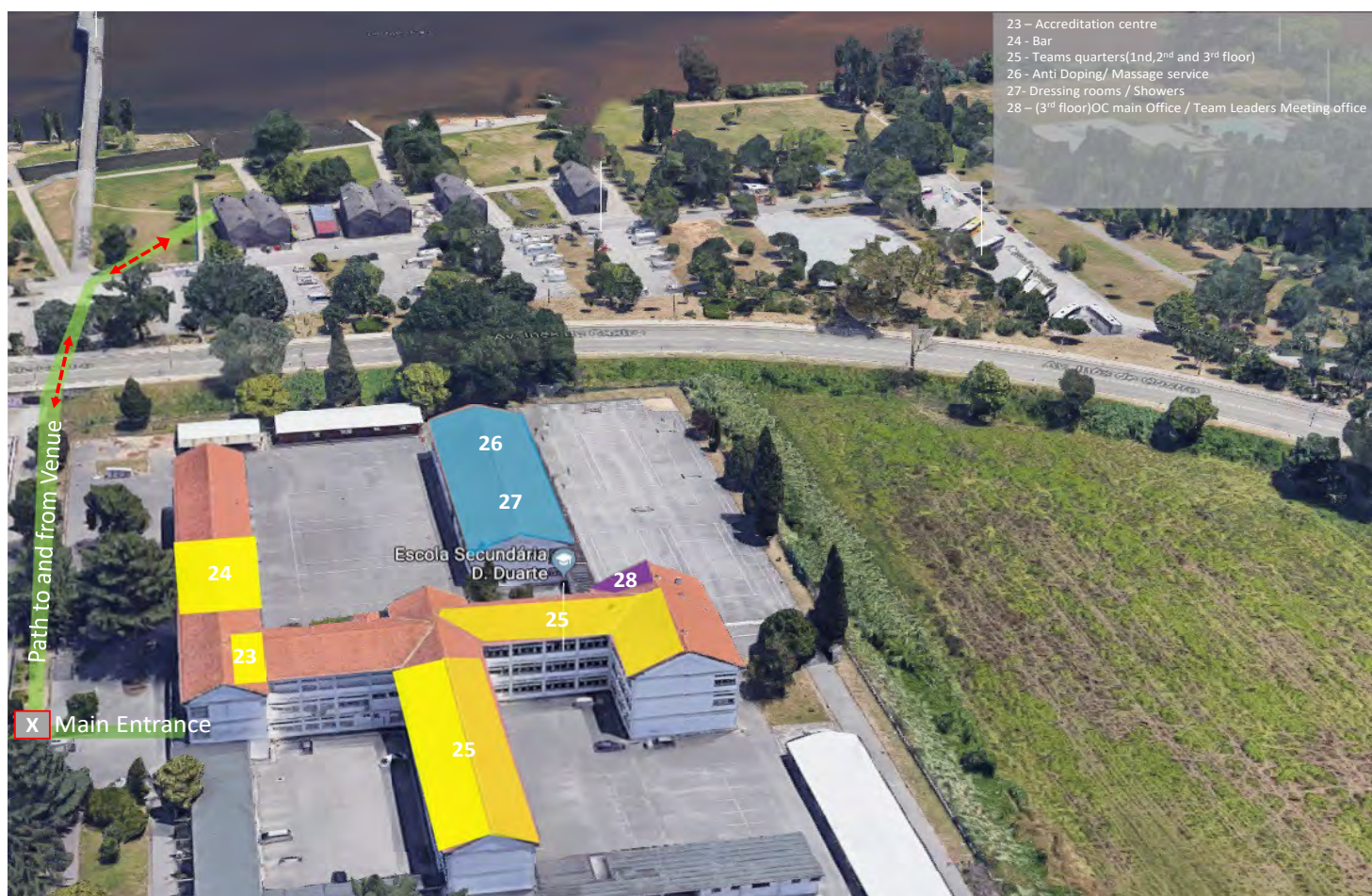


# TEAM GROUPS AND DRAWS



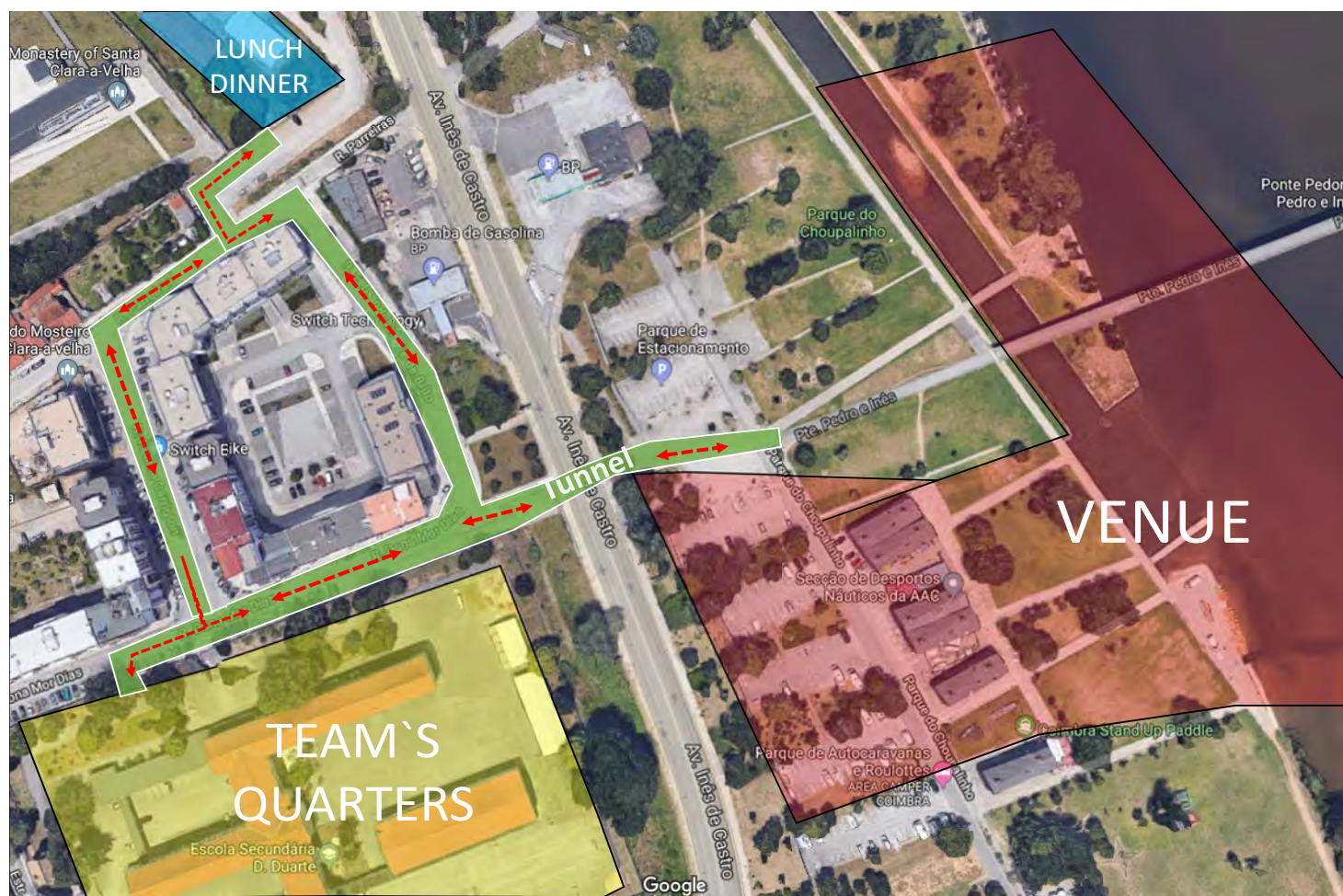


# VENUE LAYOUTS & SPORT FACILITIES



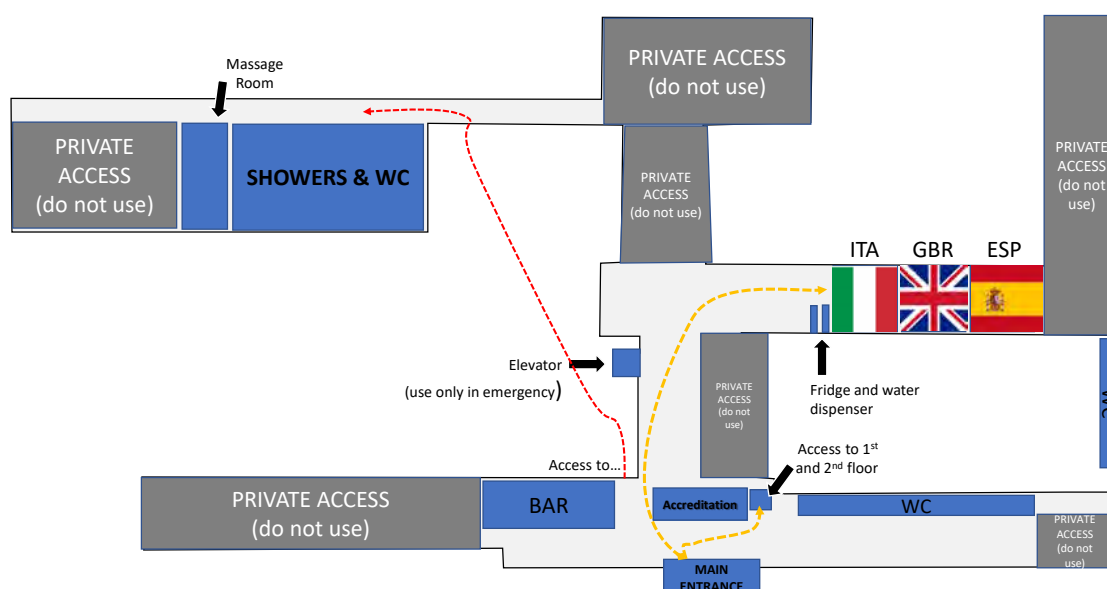


# VENUE LAYOUTS & SPORT FACILITIES

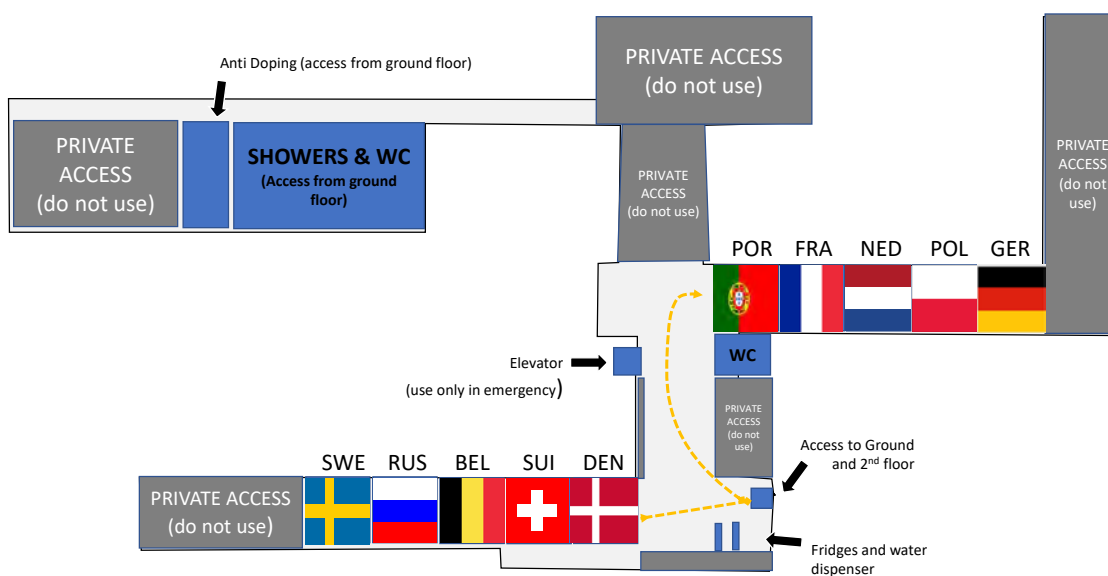




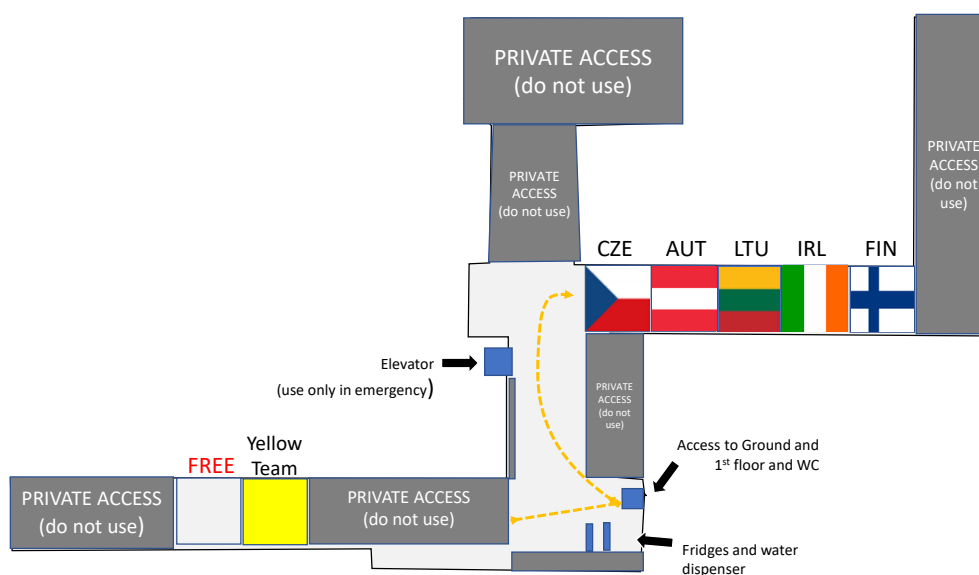
## GROUND FLOOR



## 1<sup>st</sup> FLOOR



## 2<sup>nd</sup> FLOOR



# VENUE LAYOUTS & SPORT FACILITIES

There are three different areas for the event.

1. The Venue where all 4 pitches are located and the majority of facilities for the event are located.
  2. A Secondary School, located 200 meters away from the venue, where the teams quarters are located.
  3. Lunch and dinner facilities, located on the left-hand side (facing Mondego river) of the venue and the team quarters.
- All three areas are short walking distance (less than 4 minutes) apart.

All these areas will have controlled access. All team members **MUST** always have their accreditation badge, visible to everyone.

## **VENUE** (Main structures for teams)

- Parking for team's vans and cars. When needed, Identification card(s) will be available at accreditation;
  - Info Point. It's the first "door" to talk to the Organizing Committee about transportation, accommodation or other issues. Also, competition documents and results can be collected there;
  - Organizing Committee Office. Can only be accessed by team leaders after being directed by the info point;
  - Showers (cold water) and toilets are available at the venue;
  - Boat Racks. Each TEAM will have a specific rack to hold the boats. Please look for your Team Name in the designated area.
  - Athletes lounge. When scrutineering is completed a relaxation area will be created for all athletes.
  - Bike Rental – With many of the accommodation options being close to the venue, the organizing committee provides a bike rental service.
    - 1 day of rental - 15,00 €
    - 2 days of rental - 28,00 €
    - 3 days of rental - 40,00 €
    - 4 days of rental - 48,00 €
    - 5 days of rental - 55,00 €
    - 6 days of rental- 63,00 €
    - 7 days of rental- 70,00 €
    - 8 days of rental- 72,00 €
    - 9 days of rental- 80,00 €
    - 10 days of rental- 85,00 €
    - 11 days of rental- 93,00 €
  - Boat service area. The Portuguese manufacture CONNECT will be the official supplier for the boat repair and service.
- Official website at [www.Connectkayaks.eu](http://www.Connectkayaks.eu)

## TEAM QUARTERS

At the Secondary School will be the accreditation centre, hot water showers, toilets, Massage service, anti-doping and individual rooms for each COUNTRY.



Please look at the entrance and in the attached layout where your country room is located. For Countries with more than one TEAM, the room will be prepared for the privacy of each teams.

A Bar is available in the main lobby where the games can be seen on four large plasma screens.

For the Massage service, there is a private company in charge for this service.

As already sent to all countries, reservation of massages or equipment can be done in advance.

E-mail - [actifisiopot@gmail.com](mailto:actifisiopot@gmail.com)

Phone - +351917864080

Facebook Page - <https://pt-br.facebook.com/actifisiopot>

This Service will also be available all week of competition at Team Quarters





# TRANSPORTATION AND SHUTTLE SYSTEM

## Airport Shuttle system

All teams who requested airport transport are being contacted to confirm this service.

At arrival, please find at 'Arrivals' a person with a sign showing the logo of the event.

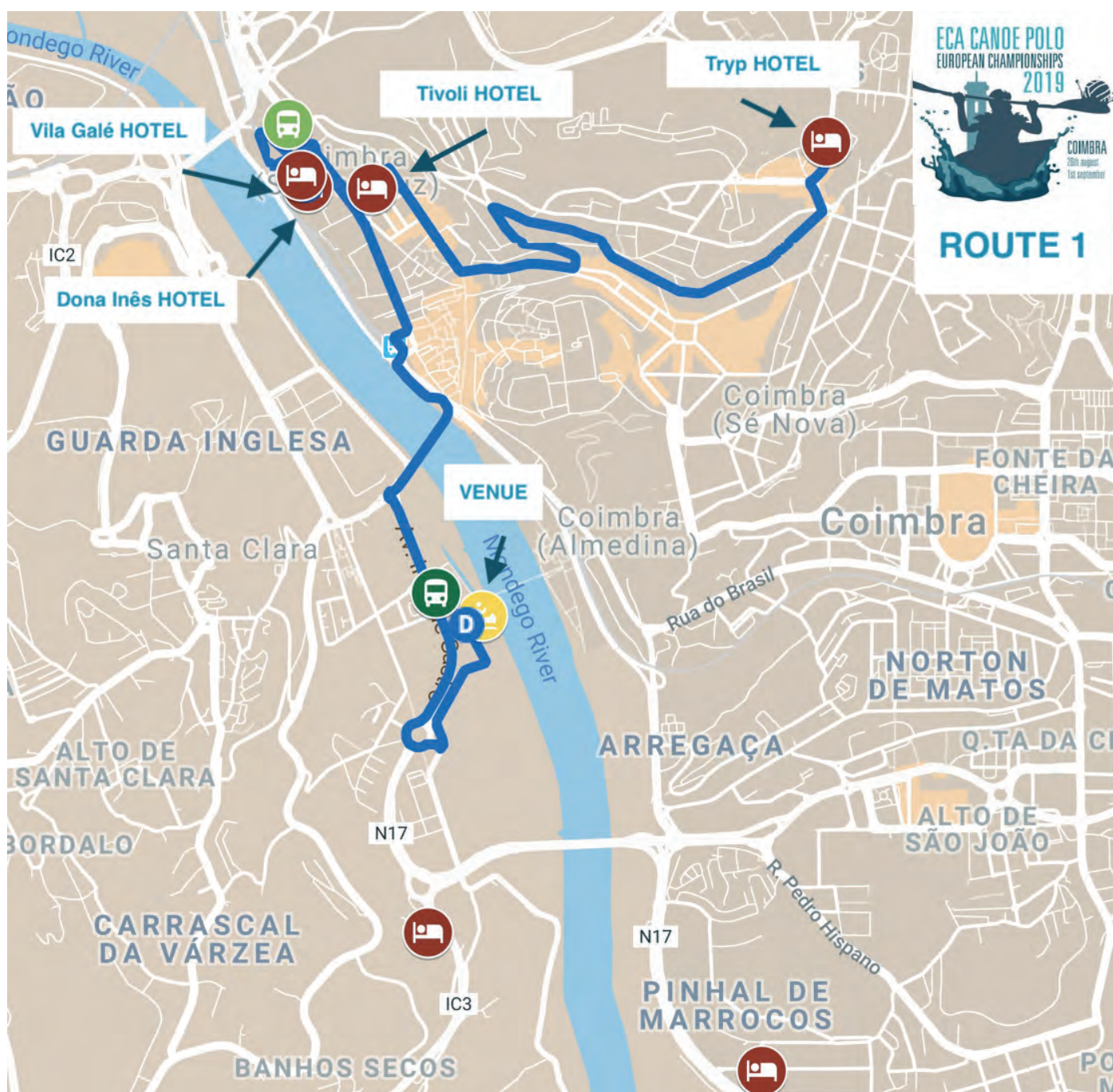
Teams who booked boat transportation to the venue must bring the boats to the dedicated van.

The organizing committee will be responsible for the loading and unloading of the boats.

Boats will be unloaded at the venue next to the boat racks.

The contracted service for the boat transportation will only include boats and all equipment inside the boat bag. No other individual objects will be allowed. Those should be taken to the Team Bus.

All teams will be required, at the venue, to confirm their departure plans at accreditation.



Teams using our airport shuttle service, that have not booked accommodation with the Organizing committee, will be taken directly to accreditation. Teams arriving during a period when accreditation is closed will be taken to a place of their choosing to a maximum of 5km from the venue. WE MUST receive the location of the drop before team's arrival.

Emergency contact for transportation. Please use only in extreme cases.

+351 916047177 Hugo Figueiras

### Competition Shuttle system

There will be pre competition and a competition shuttle system, from Monday 26th.

Two routes will be available covering the different accommodation options around the city of coimbra.

This schedule is provisional and may be updated in a daily base. Please always check the hotel lobby and Info Point at the venue.

All schedules are attached to this document





# ACCOMMODATION

Please check the table below with the distribution of teams by Hotel option.

## Be advised

- Hotels can request a deposit or other guarantee at the check-in. Deposits will be returned if nothing is broken in the rooms. For the university 15€ per person deposit is mandatory to be given at accreditation.
- Different hotel options have different services, for example: free parking etc.
- We need the room list of each team before August 21th to be sent to maria@canoportugal.com
- Check-in at the University from 18H00 on the 26 of August. On all other days from 15H00
- Check-in in all other hotels from 15H00
- Checkout until 12h00 for all accommodation options

Category	Hotel	Information	Team
2	Hotel Dona Inês	Address: R. Abel Dias Urbano 12, 3000-001 Coimbra  Phone: <a href="tel:239855800">239 855 800</a>	FIN
			RUS
			SWE
	Hotel Tivoli	Address: R. João Machado 5, 3000-226 Coimbra  Phone: <a href="tel:239858300">239 858 300</a>	DEN SENIOR WOMEN
			FRA
	Hotel Tryp	Address: Alameda Armando Gonçalves, 3000-059 Coimbra  Phone: <a href="tel:239480800">239 480 800</a>	NED
3	Hotel D. Luis	Address: Rotunda Ponte Rainha Santa Isabel, 3040-091  Phone: <a href="tel:239802120">239 802 120</a>	AUT
			FRA
			ITA
			DEN SENIOR MEN
			SWE
4	University Residence Polo II 2	Address: Rua Pedro Alpoim - Pinhal de Marrocos 3030-397 Coimbra	ESP
			GBR
			GER
			ITA
	University Residence Polo II 1	Address: Rua Miguel Bombarda, nº1, Pinhal de Marrocos, 3030-194 Coimbra	POR



# CATERING

For teams with accommodation booked through the organizing committee, 3 meals per day are included in the package.

Breakfast at the chosen accommodation option, Lunch and dinner at the venue.

Teams outside the organization accommodation package, may have lunch and dinner at the venue upon request and payment of 10 euros per person per meal. Requests to be made to [maria@canoportugal.com](mailto:maria@canoportugal.com)

Lunch and dinner menus

Vegetarian dishes are available upon request prior to August 21st to [maria@canoportugal.com](mailto:maria@canoportugal.com)

Day of the week	Monday 26	Tuesday 27	Wednesday 28
<b>LUNCH</b>			
<b>Soup</b>	Vegetables	Cabbage Beans	Leek Cream
<b>Meat option</b>	Braised Beef with White Rice and Sautéed Potatoes	Spaghetti Bolognese	Pasta Carbonara
<b>Fish Option</b>	Codfish Tibornada	Spiritual Codfish	Cold Salad with Tuna
<b>DINNER</b>			
<b>Soup</b>	Vegetables	Cabbage Beans	Leek Cream
<b>Meat option</b>	Chicken Brás	Chicken Steaks with Lime Sauce	Portuguese Pork
<b>Fish Option</b>	Fish Massada	Pota Rice	Codfish with cream
Day of the week	Thursday 29	Friday 30	
<b>LUNCH</b>			
<b>Soup</b>	Grain with kale	Fish	
<b>Meat option</b>	Grilled Chicken with Carrot Rice	Braised Beef with White Rice and Sautéed Potatoes	
<b>Fish Option</b>	Brás Codfish	Cold Salad with Hake Fillets	
<b>DINNER</b>			
<b>Soup</b>	Grain with kale	Fish	
<b>Meat option</b>	Pork Breaded with Pasta	Bolognese Beef Lasagna	
<b>Fish Option</b>	Codfish Lasagna	Pots à Lagareiro	
Day of the week	Saturday 31	Sunday 1	
<b>LUNCH</b>			
<b>Soup</b>	Juliana	Primavera	
<b>Meat option</b>	Chicken Steaks with Lime Sauce	Chicken Brás	
<b>Fish Option</b>	Codfish Tibornada	Fish Massada	
<b>DINNER</b>			
<b>Soup</b>	Juliana	Green soup	
<b>Meat option</b>	Portuguese Pork	Pork on the stick	
<b>Fish Option</b>	Brás Codfish		



## ANTI DOPING

International Canoe Federation congress has endorsed a proposal to extend compulsory anti-doping education courses to all senior, U23 and junior international athletes across all canoeing disciplines. It is important federations and teams understand that these education courses are compulsory for all international athletes and need to be completed before they compete in an international competition.

More information:

<https://www.canoeicf.com/anti-doping-education>

**No players will be allow to compete without completing this course.**

## INVOICES AND PAYMENTS

All invoices for accommodation packs, meals, participating fees and transportation must be paid before teams begin the accreditation process.

Payments can be made in advance, by bank transfer, or upon arrival by credit card or cash.

At the team quarters there is one ATM.

## MEDICAL CARE

Private medical services will be provided at the venue during the competition days.

Advanced medical services will be given at Coimbra hospital facilities.

**These are to be paid by each NF insurance directly.**

## AUDIO VISUAL

The organizing committee is making a big effort and investment for audio and visual sport presentation for this event.

There will be a multi-cam broadcast TV production for each pitch for all competition days.

Live Stream links will be published on the official website of the event at [canoepoloportugal.com](http://canoepoloportugal.com) and in the official Facebook page.

During each game statistics and data collection will be made and be used for TV graphics and published in summary at the end of each game in the online results system.

Broadcast of all games will include English speaking commentary.

Venue commentary and announcing will also be provided in English and Portuguese.

TV screens will also be available for all 4 pitches at Team Quarters, Athletes lounge, VIP and Referee's area.

## RESULTS SYSTEM

The Organizing Committee has developed a specific application for the online results system. You can access it at <http://coimbra2019.spotfokus.com>

Results and progressions will be published at the info point.

Each team leader or team responsible will be able request results on paper at the info point.

## SECURITY ON SITE

The Team quarters will be open from 7H00 to 22H00. The organizing committee does not have access this area outside these times. There is no Security in Team Quarters, besides the regular school staff.

**Be aware each Country will be given ONE key for their private room.**

**Key will have a deposit of 20 euros. The deposit will be refunded when the key is returned.**

A person from the organizing committee will check the room before departure of the team.

At the venue there will be night security provided by the organizing committee, specifically for the boats on the racks, but we cannot be responsible for no other personal objects left on the site.





# APPENDICES

# ICF Canoe Polo Scrutineering Guide for major championships

For major ICF Canoe Polo events including World Championships and World Games, scrutineering of equipment will be a 3 - step process.

## 1. Cosmetic Tests

At the commencement of scrutineering, each team will present their equipment for checking. The whole team will have a visual check to ensure a high quality uniform appearance of helmets, PFD's and kayaks. **Each failed item MAY be subject to a 50€ fine (as determined by the event organisers). This fine must be paid before rechecking will occur before progressing to Step 2.**

For multiple cosmetic test failures the whole team will lose their scrutineering time slot and will return for rechecking at a later time. Rechecking will take place after all other teams have had their initial checks. Practice times will not be rescheduled.

## 2. Safety Checks

All kayaks, paddles and helmets will be subject to safety checks for sharp edges. These checks have NOT changed and any failures will need to be rectified.

PFD's will be subject to padding thickness checks. Pfd's will also be checked for number dimensions.

Each player will initially be required to wear his or her Helmet (with facemask). These will be checked for compliance with section 106 and also for helmet number size .

The bumpers of EVERY kayak will be checked for condition- they must correctly attached in new or near new condition and of the correct dimensions. **Any failures will be required to be replaced. Glue or silicone on the bumper that is still wet will result in a fail. Equipment will be sent away from the scrutineer area and must be returned later for a check.**

All paddles will be checked for edge thickness, corner radius (30mm) and sharp edges. **Any failures will need to be rectified as these specifications have NOT changed.**

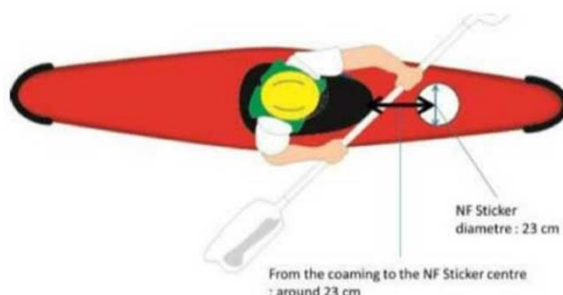
Any issues identified on any piece of equipment will be clearly noted on the team check sheet and initialled by the scrutineer. This issue must be rectified prior to the equipment moving onto the next stage.

## 3. Technical Checks Note: due to wear and tear-Bumpers are a safety check not a technical check.

Any kayak with an ICF label may be selected for a random check with full gauges for the technical specifications. **Any kayak with an ICF label failing the technical specifications will be banned from use and the manufacturer will be asked to explain**-Note: severe penalties apply.

Any kayak without an ICF label will be subject to a check with full gauges for the technical specifications.

**There is an area reserved for NF sticker.**



## Step 1 – Cosmetic Checks

This step will ensure all items of equipment are uniform in colour and decals for each team.

Kayak checks will ensure any vinyl covering is of a high quality, with limited wrinkles and creases and will last the duration of the event. If vinyl covering is used it must uniform in colour and texture for the whole team.



**Cosmetic Check FAIL**- Vinyl covering must be smooth and done with care to match the whole team. Ensure a good professional look that lasts the whole event. 50€ fine would apply per kayak



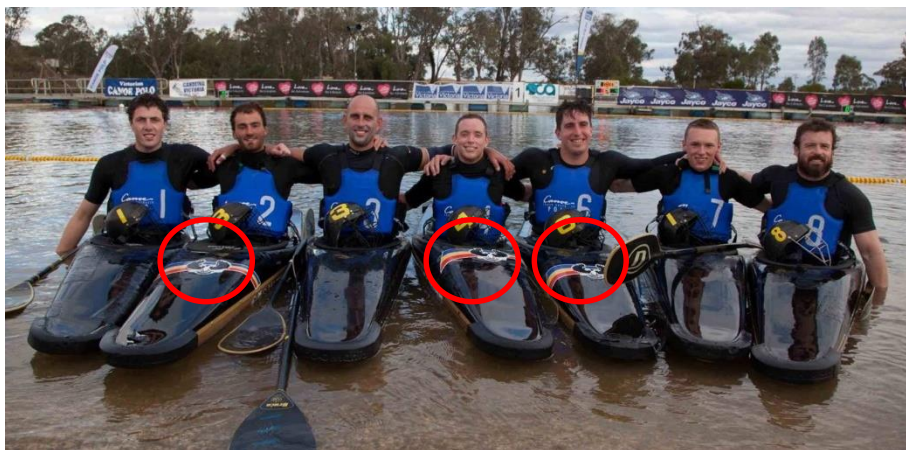
**Cosmetic Check FAIL**- 2 kayaks with significant red showing and kayaks with different logo's or decals above join line- 5 \* 50€ fine would apply



Kayaks must be uniform in colour and logos above the edge (for World Games they must also be uniform below the edge). Clear finish must be uniform in terms of weave.



**Cosmetic Check FAIL**- The clear carbon boat looks different in colour \* 50€ fine would apply



**Cosmetic Check FAIL**- 3 kayaks with different decals above join line- 3 \* 50€ fine would apply



**Cosmetic Check PASS**- All kayaks, PFD's and helmets the same

Helmets must be of a uniform solid base colour- the practice of covering a helmet with strips or sections of vinyl or tape is no longer acceptable.

Helmet numbers must be the minimum size of 75mm high and be a clearly contrasting colour and font size to stand out from a distance. Helmet numbers must be cut from one piece of vinyl. Strips of tape or vinyl to create numbers is no longer acceptable.



**Cosmetic Check PASS-** all helmets, kayaks and decals the same

All stickers and logos must be identical in size, colour and location. Previous events scrutineering stickers must be removed.



**Cosmetic Check FAIL-** different logo's on each helmet 50 € fine per helmet.

Body protection must be uniform in colour and appearance. Minimum number size Front 100mm and back 200mm.



**Cosmetic Check FAIL-** numbers the wrong size. 50€ fine would apply per PFD



## Step 2 - Safety Checks

This step will check all equipment for points of safety.

### Kayaks

Will be tested for sharp edges, rough surfaces and padding attachment.

**Kayak padding must be in new or near new condition** and in one homogenous piece firmly attached to the kayak with no loose edges or ends as per the specifications. No tape, wrapping, extra foam or other substances may be used to increase the padding profile or to ensure correct attachment!



FAIL- loose edges and pieces missing



FAIL- pieces missing



FAIL- loose edges and pieces missing



FAIL- exposed corners where bumper joins boat



FAIL- too thin



FAIL- full tape wrap NOT allowed



FAIL- exposed corners where bumper joins boat



Pass- well fitted bumper- no major gaps.



Pass- edge tape is ok as long as no gaps underneath

Any padding failing Step 2 must be replaced with a new padding of the appropriate type to suit the kayak design before it will pass. It is recommended that teams or individuals carry spare sets of padding for each design (Minor repairs can be completed during the event with tape or wrapping)

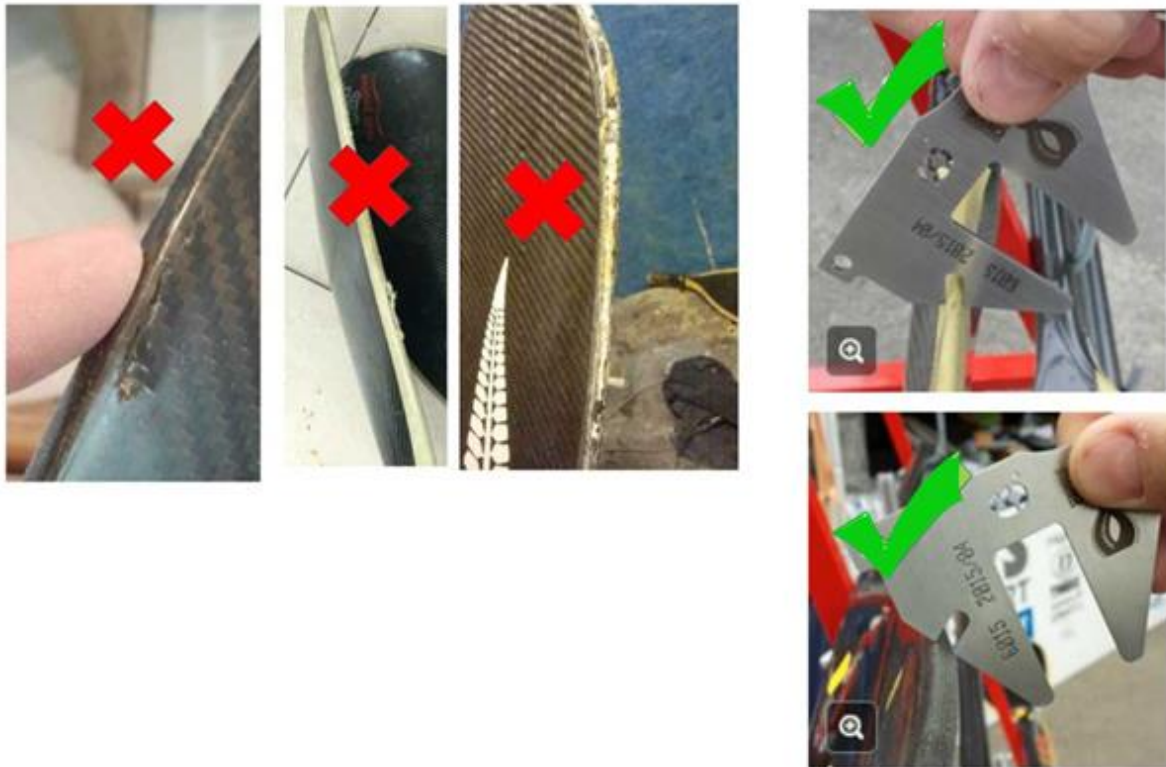


## Paddles

Must have no sharp edges or loose tape. Edge thickness will be tested using the appropriate gauge. Edging materials such as Kevlar tape must be correctly attached with no loose edges.

Electrical tape or equivalent is no longer acceptable to make paddles thicker or to cover sharp edges as it is too easily removed or comes off.

If the paddle edge is damaged a more permanent solution such as Kevlar edging is required.



When using the gauge if a paddle is able to enter the slot and reaches the bottom, this will be classed as a fail.

“51.5. Players may not apply any greasy substances to their equipment that change the frictional coefficient of the original surface.”



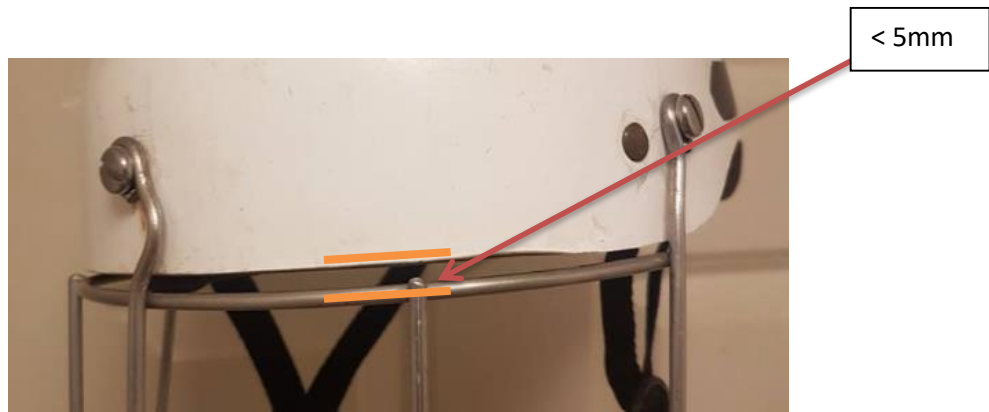
Wax will only be allowed on the paddle shaft, in an area that would be covered by the athlete's hand when paddling normally.

Epoxy repairs are still allowed.

## Helmets

Must have a correctly fitting facemask that covers from the jawline to the temple. It must also comply with the regulations in section 106.

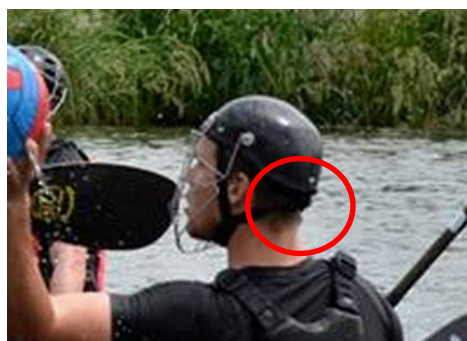
**\*\* Note \*\*** A gap of less than 5mm between the top of the faceguard and the helmet will be allowed. The 5mm can be measured using the paddle gauge.



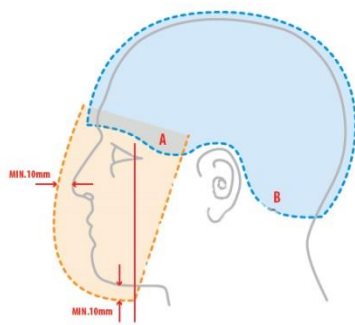
Fail - does not cover chin



Fail - does not cover chin



Fail – occipital bone not covered.



Recommended coverage



Red area: Helmet

Blue area: Facemask

Minimum coverage – note chin

The faceguard needs to be fitted so that a paddle cannot enter the gap between the face and faceguard when the head is tilted back.

### Helmet bolts

Must not stick out too far or be dangerous (rusty, Bolt sticking out of nut and so on).



### Body protection

In the form of a PFD must have the required thickness of 20mm on the front, back and sides (See specification in section 107).

(Please note- this is a NEW specification to improve player safety. PFD's that previously passed scrutineering may not meet this increased specification.)





### Step 3 - Technical Checks

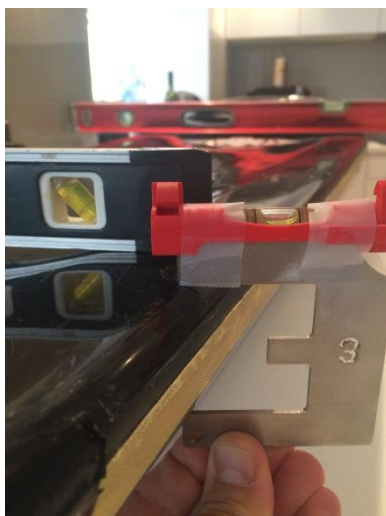
This step will check the technical aspects of all equipment in particular the kayaks.

Kayaks will be checked for the following:

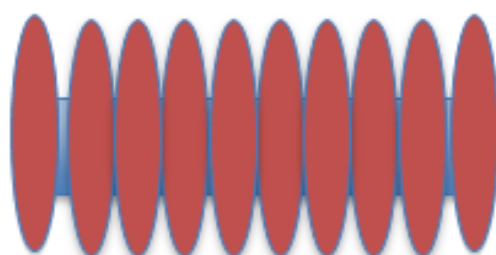
- ICF Canoe Polo Kayak Manufacturing Label fixed inside kayak. Any kayak built after January 1<sup>st</sup> 2015 must have an ICF label permanently fixed on the inside surface in front of the seat. These kayaks will receive the following checks:
  - Random gauge checks of all main dimensions- Length, Width, Depth and Weight
  - Random gauge checks of all main radii and/or height/depth/width
- Any kayak built prior to January 1<sup>st</sup> 2015 that does not have an ICF Label will be subject to ALL of the standard gauges for length, width, depth, weight and radii. Note: After January 1<sup>st</sup> 2021, all kayaks must have an ICF Label to be used in ICF events including World Championships and World Games. (This does not prevent these kayaks being used in other competitions around the world.)

**Any kayak failing any technical specifications will fail scrutineering and will not be able to be used in the event.**

Example Label:



Stage 1 - Players are pre-checked wearing helmet for safety checks.  
Volunteers take kayaks and equipment behind screens for cosmetic checks.



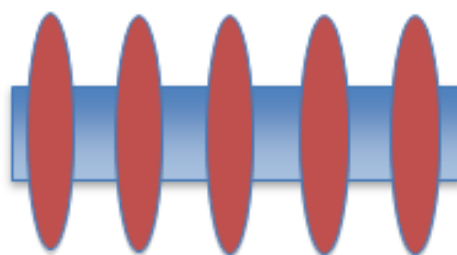
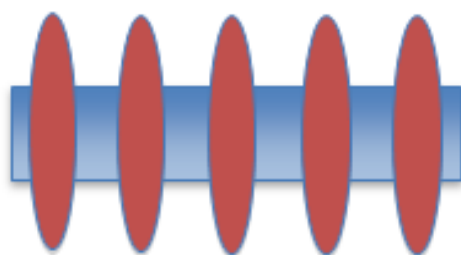
Paddles, Helmets, PFD's

Each kayak gets a scrutineering sheet attached to the seat to track progress

Stage 2 - Once cosmetic checks are passed all kayaks and equipment proceed to safety checks  
(volunteers to help transfer items to new area)

Paddles

Helmets, PFD's



Stage 3 - Technical Checks. Kayaks checked for ICF Label, dimension and gauge tests

Dimension tests including  
length, width, depth, radii

Dimension tests including  
length, width, depth, radii

Once technical checks are complete, kayaks and equipment returned to team representative.  
Kayaks failing technical specifications will not pass scrutineering and cannot be used.



CÂMARA MUNICIPAL  
DE  
COIMBRA



# ROUTE 1

V.1.2 (21/08/2019)





CÂMARA MUNICIPAL  
DE  
COIMBRA



PRE COMPETITION DAYS - 26/27/28 AUGUST - ROUTE 1

TRYP	DONA INÊS/VILA GALÉ	TIVOLI	CHOUPALINHO
→	→	→	→
08:00	08:10	08:15	08:25
10:00	10:10	10:15	10:25
12:30	12:40	12:45	12:55
15:00	15:10	15:15	15:25
CHOUPALINHO	TIVOLI	DONA INÊS/VILA GALÉ	TRYP
→	→	→	→
10:30	10:40	10:45	10:55
13:00	13:40	12:45	13:55
15:30	15:40	15:45	15:55
19:00	19:10	19:15	19:25
20:00	20:10	20:15	20:25
21:15	21:25	21:30	21:40





CÂMARA MUNICIPAL  
DE  
COIMBRA



COMPETITION DAYS - 29 AUGUST - ROUTE 1

TRYP	DONA INÊS/VILA GALÉ	TIVOLI	CHOUPALINHO
→	→	→	→
06:50	07:00	07:05	07:15
07:20	07:30	07:35	07:45
08:00	08:10	08:15	08:25
09:00	09:10	09:15	09:25
10:00	10:10	10:15	10:25
11:00	11:10	11:15	11:25
12:00	12:10	12:15	12:25
13:00	13:10	13:15	13:25
14:00	14:10	14:15	14:25
15:00	15:10	15:15	15:25
16:00	16:10	16:15	16:25

CHOUPALINHO	TIVOLI	DONA INÊS/VILA GALÉ	TRYP
→	→	→	→
10:30	10:40	10:45	10:55
11:30	11:40	11:45	11:55
12:30	12:40	12:45	12:55
13:30	13:40	13:45	13:55
14:30	14:40	14:45	14:55
15:30	15:40	15:45	15:55
16:30	16:40	16:45	16:55
19:00	19:10	19:15	19:25
20:15	20:25	20:30	20:40
21:15	21:25	21:30	21:40



CÂMARA MUNICIPAL  
DE  
COIMBRA



COMPETITION DAYS - 30 AUGUST - ROUTE 1

TRYP	DONA INÊS/VILA GALÉ	TIVOLI	CHOUPALINHO
→	→	→	→
06:50	07:00	07:05	07:15
07:20	07:30	07:35	07:45
08:00	08:10	08:15	08:25
09:00	09:10	09:15	09:25
10:00	10:10	10:15	10:25
11:00	11:10	11:15	11:25
12:00	12:10	12:15	12:25
13:00	13:10	13:15	13:25
14:00	14:10	14:15	14:25
15:00	15:10	15:15	15:25
16:00	16:10	16:15	16:25
17:00	17:10	17:15	17:25
CHOUPALINHO	TIVOLI	DONA INÊS/VILA GALÉ	TRYP
→	→	→	→
10:30	10:40	10:45	10:55
11:30	11:40	11:45	11:55
12:30	12:40	12:45	12:55
13:30	13:40	13:45	13:55
14:30	14:40	14:45	14:55
15:30	15:40	15:45	15:55
16:30	16:40	16:45	16:55
17:30	17:40	17:45	17:55
19:00	19:10	19:15	19:25
20:15	20:25	20:30	20:40
21:15	21:25	21:30	21:40





CÂMARA MUNICIPAL  
DE  
COIMBRA



COMPETITION DAYS - 31 AUGUST - ROUTE 1

TRYP	DONA INÊS/VILA GALÉ	TIVOLI	CHOUPALINHO
→	→	→	→
06:50	07:00	07:05	07:15
07:20	07:30	07:35	07:45
08:00	08:10	08:15	08:25
09:00	09:10	09:15	09:25
10:00	10:10	10:15	10:25
11:00	11:10	11:15	11:25
12:00	12:10	12:15	12:25
13:00	13:10	13:15	13:25
14:00	14:10	14:15	14:25
15:00	15:10	15:15	15:25
16:00	16:10	16:15	16:25
17:00	17:10	17:15	17:25
CHOUPALINHO	TIVOLI	DONA INÊS/VILA GALÉ	TRYP
→	→	→	→
10:30	10:40	10:45	10:55
11:30	11:40	11:45	11:55
12:30	12:40	12:45	12:55
13:30	13:40	13:45	13:55
14:30	14:40	14:45	14:55
15:30	15:40	15:45	15:55
16:30	16:40	16:45	16:55
17:30	17:40	17:45	17:55
19:00	19:10	19:15	19:25
20:30	20:40	20:45	20:55
21:30	21:40	21:45	21:55



CÂMARA MUNICIPAL  
DE  
COIMBRA



COMPETITION DAYS - 1 SEPTEMBER - ROUTE 1

TRYP	DONA INÊS/VILA GALÉ	TIVOLI	CHOUPALINHO
→	→	→	→
06:50	07:00	07:05	07:15
07:20	07:30	07:35	07:45
08:00	08:10	08:15	08:25
09:00	09:10	09:15	09:25
10:00	10:10	10:15	10:25
11:00	11:10	11:15	11:25
12:00	12:10	12:15	12:25
13:00	13:10	13:15	13:25
14:00	14:10	14:15	14:25
15:00	15:10	15:15	15:25
16:00	16:10	16:15	16:25
20:15	20:25	20:30	20:40
CHOUPALINHO	TIVOLI	DONA INÊS/VILA GALÉ	TRYP
→	→	→	→
10:30	10:40	10:45	10:55
11:30	11:40	11:45	11:55
12:30	12:40	12:45	12:55
13:30	13:40	13:45	13:55
14:30	14:40	14:45	14:55
15:30	15:40	15:45	15:55
16:30	16:40	16:45	16:55
19:00	19:10	19:15	19:25
01:00	00:10	00:15	00:25



CÂMARA MUNICIPAL  
DE  
COIMBRA



# ROUTE 2

V.1.2 (21/08/2019)





CÂMARA MUNICIPAL  
DE  
COIMBRA



PRE COMPETITION DAYS - 26/27/28 AUGUST - ROUTE 2

POLO II

D.LUÍS

CHOUPALINHO



07:40

07:45

08:00

08:10

08:15

10:00

10:10

10:15

12:30

12:40

12:45

15:00

15:10

15:15

CHOUPALINHO

D.LUÍS

POLO II



10:30

10:35

10:45

13:00

13:05

12:15

15:30

15:35

15:45

19:00

19:05

19:15

20:00

20:05

20:15

21:15

21:20

21:30

First trip exclusive for volunteers





CÂMARA MUNICIPAL  
DE  
COIMBRA



## COMPETITION DAYS - 29 AUGUST - ROUTE 2

POLO II	D.LUÍS	CHOUPALINHO
→	→	→
06:35		06:40
06:55	07:05	07:10
07:30	07:40	07:45
08:00	08:10	08:15
09:00	09:10	09:15
10:00	10:10	10:15
11:00	11:10	11:15
12:00	12:10	12:15
13:00	13:10	13:15
14:00	14:10	14:15
15:00	15:10	15:15
16:00	16:10	16:15
VENUE	D.LUÍS	POLO II
→	→	→
10:30	10:35	10:45
11:30	11:35	11:45
12:30	12:35	12:45
13:30	13:35	13:45
14:30	14:35	14:45
15:30	15:35	15:45
16:30	16:35	16:45
19:00	19:05	19:15
20:15	20:20	20:30
21:15	21:20	21:30

First trip exclusive for volunteers



CÂMARA MUNICIPAL  
DE  
COIMBRA



## COMPETITION DAYS - 30 AUGUST - ROUTE 2

POLO II	D.LUÍS	CHOUPALINHO
→	→	→
06:35		06:40
06:55	07:05	07:10
07:30	07:40	07:45
08:00	08:10	08:15
09:00	09:10	09:15
10:00	10:10	10:15
11:00	11:10	11:15
12:00	12:10	12:15
13:00	13:10	13:15
14:00	14:10	14:15
15:00	15:10	15:15
16:00	16:10	16:15
17:00	17:10	17:15
VENUE	D.LUÍS	POLO II
→	→	→
10:30	10:35	10:45
11:30	11:35	11:45
12:30	12:35	12:45
13:30	13:35	13:45
14:30	14:35	14:45
15:30	15:35	15:45
16:30	16:35	16:45
19:00	19:05	19:15
20:15	20:20	20:30
21:15	21:20	21:30

First trip exclusive for volunteers





CÂMARA MUNICIPAL  
DE  
COIMBRA



## COMPETITION DAYS - 31 AUGUST - ROUTE 2

POLO II	D.LUÍS	VENUE
→	→	→
06:35		06:40
06:55	07:05	07:10
07:30	07:40	07:45
08:00	08:10	08:15
09:00	09:10	09:15
10:00	10:10	10:15
11:00	11:10	11:15
12:00	12:10	12:15
13:00	13:10	13:15
14:00	14:10	14:15
15:00	15:10	15:15
16:00	16:10	16:15
17:00	17:10	17:15
VENUE	D.LUÍS	POLO II
→	→	→
10:30	10:35	10:45
11:30	11:35	11:45
12:30	12:35	12:45
13:30	13:35	13:45
14:30	14:35	14:45
15:30	15:35	15:45
16:30	16:35	16:45
19:00	19:05	19:15
20:30	20:35	20:45
21:15	21:20	21:30

First trip exclusive for volunteers



CÂMARA MUNICIPAL  
DE  
COIMBRA



## COMPETITION DAYS - 1 SEPTEMBER - ROUTE 2

POLO II	D.LUÍS	CHOUPALINHO
→	→	→
06:35		06:40
06:55	07:05	07:10
07:30	07:40	07:45
08:00	08:10	08:15
09:00	09:10	09:15
10:00	10:10	10:15
11:00	11:10	11:15
12:00	12:10	12:15
13:00	13:10	13:15
14:00	14:10	14:15
15:00	15:10	15:15
16:00	16:10	16:15
17:00	17:10	17:15
20:15	20:25	20:30
CHOUPALINHO	D.LUÍS	POLO II
→	→	→
10:30	10:35	10:45
11:30	11:35	11:45
12:30	12:35	12:45
13:30	13:35	13:45
14:30	14:35	14:45
15:30	15:35	15:45
16:30	16:35	16:45
19:00	19:05	19:15
01:30	01:05	01:15

First trip exclusive for volunteers

# ECA CANOE POLO EUROPEAN CHAMPIONSHIPS 2019



COIMBRA  
26th august  
1st september

[www.canoeportugal.com](http://www.canoeportugal.com)

[marcos@canoeportugal.com](mailto:marcos@canoeportugal.com)

Telephone +351 225432237

FAX: +351 225432238

